



Broxap Hi-Rise Two Tier Cycle System Installation & Maintenance Instructions



Broxap Limited, Rowhurst Industrial Estate, Chesterton,
Newcastle-under-Lyme, Staffordshire ST5 6BD
Tel: 01782 571660 • Email: shelters@broxap.com

POSITIONING OF LEGS ON THE GROUND

1. METHOD OF FASTENING LEGS TO THE GROUND IS THE RESPONSIBILITY OF THE INSTALLER AND AS SUCH HOW THEY SECURE IT TO THE GROUND IS TO BE SPECIFIED BY THEM. BUT THE LEGS MUST BE FIRMLY AND SECURLY BOLTED TO SUITABLE SUBSTRATE SO THAT THE SYSTEM DOES NOT MOVE IN ANYWAY
2. LEG TUBES THAT SIT ON GROUND ARE TO BE LEVELED USING A SPIRT LEVEL – BUBBLE IN GLASS TO BE IN BETWEEN LINES - **SEE PICTURE 1**
3. VERTICAL TUBE OF LEG TO BE SIGHTED WITH A SPIRT LEVEL- BUBBLE IN GLASS TO BE IN BETWEEN LINES – **SEE PICTURE 2 & 3 (over page)**
4. THIS IS TO BE DONE ON BOTH THE FRONT AND SIDES OF EACH LEG TUBE AND IS TO MAKE SURE LEG IS LEVELLED CORRECTLY
5. NO PACKERS TO BE INSTALLED UNDER GROUND SECURING PLATES, UNLESS WITH PRIOR APPROVAL
6. NO PACKERS OR INSERTS TO BE ADDED BETWEEN LEG AND BEAMS, UNLESS WITH PRIOR APPROVAL



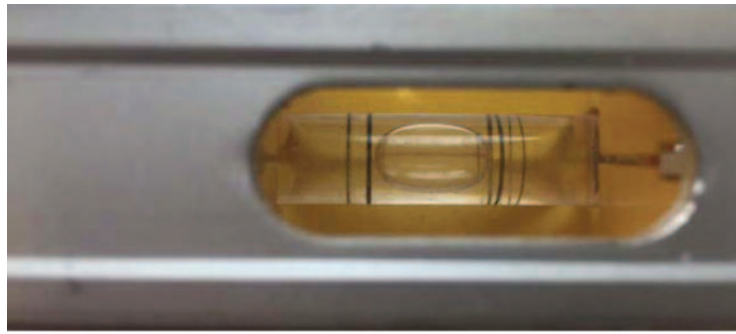
Picture 1



Picture 1



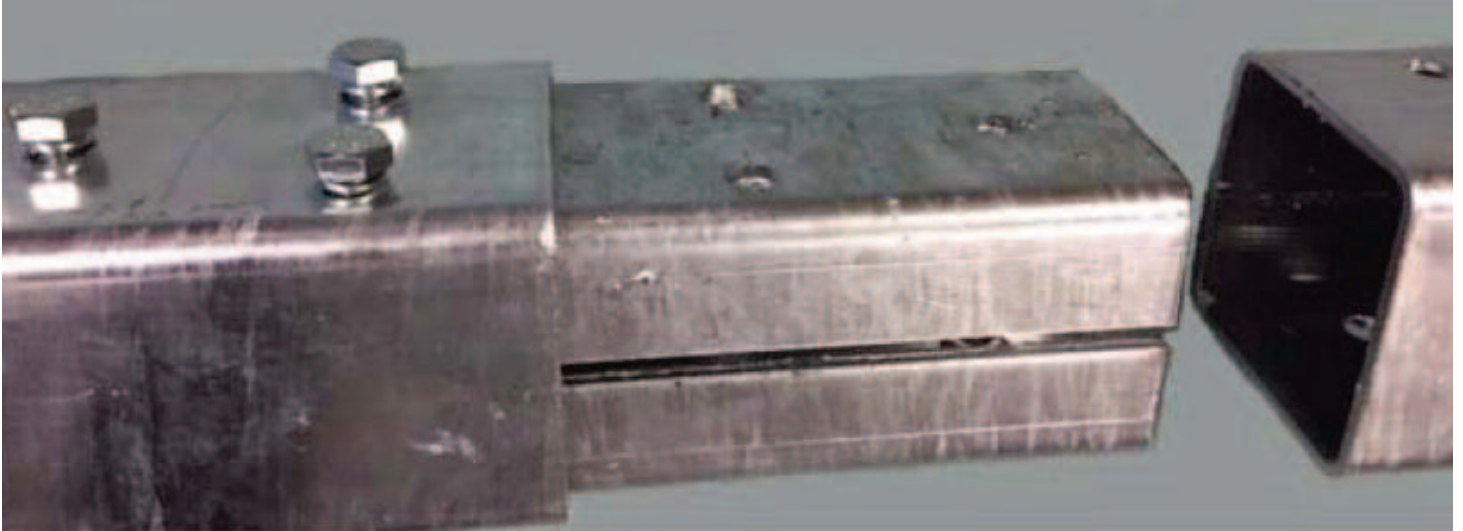
Picture 2



Picture 3

SECURING BEAM TUBE LENGTHS TOGETHER

12 OFF M12 X 30 MM LONG BOLTS WITH 8.8 TENSILE STRENGTH ARE TO BE USED TO SECURE EACH BEAM SECTION TOGETHER - 6 BOLTS ON TOP OF THE BEAM AND 6 UNDERNEATH – **PICTURE 4 & 5**
1 OFF M12 PLAIN WASHER AND 1 OFF M12 SPRING WASHER POSITIONED UNDER EACH BOLT HEAD



Picture 4

NO LUBRICATION IS TO BE APPLIED TO THE BOLTS

BEAM SECTIONS ARE SECURED TOGETHER USING 2 OFF 6 MM THICK BEAM U BRACKETS.



Picture 5

BOLTS ARE TO BE TIGHTENED TO 80 NM USING A CALIBRATED TORQUE WRENCH – **PICTURE 5**

POSITIONING OF LEGS AND RUNNER POST ASSEMBLIES ONTO the BEAMS

RUNNER POST AND LEG SECURING PLATES TO BE PLACED OVER BEAM SQUARE PLATES.
SECURE ALL LEGS AND RUNNER POST TO BEAMS WITH 4 OFF M12 x30 MM LONG 8.8 TENSILE BOLTS
1 OFF M12 PLAIN WASHER UNDER EACH BOLT HEAD AND UNDER m12 NYLOC NUT.
BOLTS ARE TO BE TIGHTENED TO 80 NM USING A CALIBRATED TORQUE WRENCH



Picture 7

NO LUBRICATION IS TO BE APPLIED TO ANY OF THE SYSTEM BOLTS

ALL MEASURING DEVICES ARE TO BE CALIBRATED

CHECK LIST FOR INSTALLATION IS TO BE FORWARDED TO EJW WHEN SITE HAS BEEN COMPLETED, INCLUDING PHOTOS OF SYSTEM.

SECURING OF RUNNER POST AND LEG ASSEMBLY TO BEAM

RUNNER POST AND LEG SECURING PLATES TO BE PLACED OVER BEAM SQUARE PLATES. INSERT 4 OFF M12 x 3mm BOLTS, PLACE PLAIN WASHER UNDER BOLT HEAD, AND USE NYLOC NUT SUPPLIED TO SECURE.

ALL BOLTS ARE TO BE SECURED TO 80Nm WITH A TORQUE WRENCH



CHECK THAT THE RUNNER MOVES OUT AND DROPS DOWN TO THE FLOOR. THE HANDLE SHOULD NOT TOUCH THE FLOOR.

3 MONTHLY MAINTENANCE REQUIREMENT

ALL M12 LEG, RUNNER POST AND BEAM SECURING BOLTS ARE TO BE CHECKED EVERY 3 MONTHS. TIGHTNESS OF BOLTS TO BE CHECKED TO 80 NM WITH A CALIBRATED TORQUE WRENCH

- SYSTEM LOCATION:
- NUMBER OF UPPER RUNNER UNITS :
- ALL LEG BOLTS CHECKED WITH TORQUE WRENCH TO 80NM: YES / NO
- TORQUE WRENCH GAUGE NUMBER:
- LEGS : EVERY 3 MONTHS ANGLE OF LEGS ARE TO BE CHECKED WITH A SPIRT LEVEL – BUBBLE IN GLASS TO BE IN BETWEEN LINES. ALL VERTICAL TUBE LEG FACES ARE TO BE CHECKED IN THE SAME WAY:

ARE LEGS SQUARE: YES/NO

- FASTENINGS ON HANDLE AND D LOCK ARE TO BE VISIBLY CHECKED, ARE THEY LOOSE OR DAMAGED? HAS ANY ATTEMPT TO UNDO THEM BEEN MADE? HANDLE AND D LOCKS ARE SECURED WITH SHEAR NUTS SO THEY CANNOT BE TIGHTENED.

ARE THE PARTS LISTED IN GOOD CONDITION: YES / NO
COMMENTS :

- FASTENINGS THAT SECURE RUNNER TO BEARING HOUSING ARE TO BE CHECKED TO SEE IF THEY ARE LOOSE. THE BOLTS ARE SECURED WITH NYLOC NUTS CHECK TO SEE IF THEY ARE LOOSE.
- BEARINGS : NO MAINTENANCE IS REQUIRED ON THE BEARINGS. DO NOT OIL THEM
- HANDLES : HAVE THE HANDLES BEEN DAMAGED, BENT OR BROKEN.
- D LOCK HOOP : DOES IT MOVE FREELY, IS IT DAMAGED?
- WIRE WORK THAT HOUSES A BIKE FRONT WHEEL:
- HAS THE WIRE WORK BEEN DAMAGED, BENT OR BROKEN
- RUNNER TROUGHS : DO THEY MOVE FREELY IN SUPPORT CHANNEL. IS THE RUNNER TWISTED OR BENT?
- NO LUBRICATION IS REQUIRED ON ANY PART OF THE SYSTEM